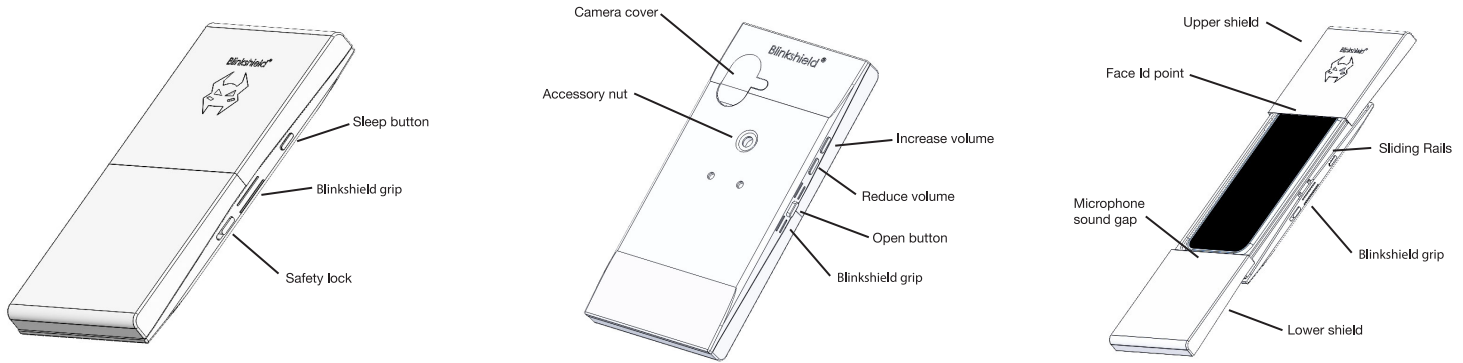
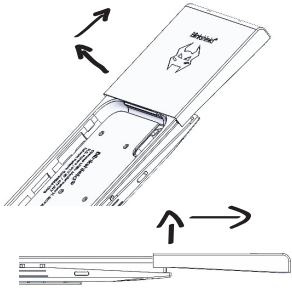


WARNING MOVE THE UPPER COVER TO THE TOP BEFORE INSTALLATION and REMOVAL

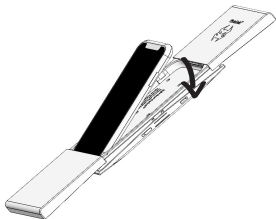


Installation Instructions

1. Pull up and move the cover to the top until it reaches the end.

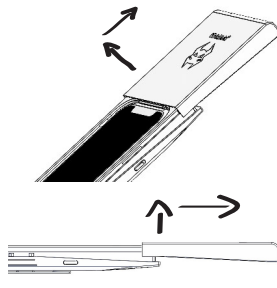


2. Allocate the phone on the bottom of the cover and push it down firmly.

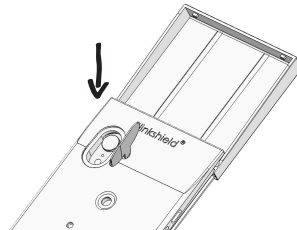


Removal Instructions

1. Pull up and move the cover to the top until it reaches the end.



2. Remove the camera cover and push the phone through the hole to release it.



User Manual

Box contents

01 Blinkshield Mechanical Rapid Cover
02 User Manual
03 Sticker

How to use the Blinkshield

Clean your phone before you install it and follow the installation instructions.

To open the Blinkshield click down the safety lock it down, hold it by the grips without touching the covers and press firmly the open button.

To close the Blinkshield be sure that the safety lock is down and close both shields by sliding them to the center point until you hear a click.

Activate the safe by sliding the safety lock upwards.

During a phone conversation you may need to increase your voice volumen.

To use the phone camera remove the camera cover and rotate it to keep it on the side while taking pictures.

Maintenance

In order to keep the Blinkshield fully functional keep the sliding rails clean, Do not use abrasive liquids.

Be sure that the gap between the screen and the covers is clean.

Accessories

The accessory nut is a Whitworth thread type, is compatible with all camera tripods, and compatible with the accessories that are sold separately. Do not over screw beyond its limit.

Technical Specifications

Dimensions

178 mm(L) 89 mm (W) 20 mm (H)

Materials

ABS Plastics Reinforced with Polycarbonate
Stainless Steel screws
Stainless Steel Power Springs

Warranty

Find the Warranty for the Blinkshield by following this link:
Blinkshield.com/warranty

Blinkshield Cover will not be responsible for any damage that will occur to your phone while in use.

Customer Support

As a customer I'm happy to hear from you. Get in touch using the contact details provided, service@blinkshield.com whats app : +63 915 0692333

Further Guidance

If your Blinkshield does not open fast enough it is probably because it is brand new. It takes some time for its parts to a adapt to each other until it reaches full speed, just be patient.



Blinkshield®
Mechanical Rapid Cover.